



Rabbit anti Annexin IV Polyclonal Antibody

Alternative Name(s): ANXA4, ANX4, PIG28, ZAP36

Order Information

- **Description:** Annexin IV
- **Catalogue:** 500-13514
- **Lot:** See label
- **Size:** 100ug/200ul
- **Host:** Rabbit
- **Clone:** nan
- **Application:** WB
- **Reactivity:** Hu, Ms, Rt

ANTIGEN PREPARATION

A synthetic peptide corresponding to the N-terminus of human Annexin IV. This sequence is identical to human, mouse and rat.

BACKGROUND

The annexins are a family of highly homologous Calcium and phospholipid binding proteins. It is composed of at least ten mammalian genes. It is characterized by a conserved core domain which binds to phospholipids in a Ca²⁺ dependent manner and a unique amino terminal region which may confer binding specificity. Annexin family members have been implicated as regulators of such diverse processes as ion flux, endocytosis/exocytosis and cellular adhesion, Annexin IV, also referred to as endonexin, functions to regulate Cl⁻ flux by mediating calmodulin kinase II (CaMKII) activity while Annexin V has been shown to regulate PKC activity. The expressive amounts of several annexins have been shown to alter in certain pathological states such as brain ischemia and Alzheimer's disease.

PURIFICATION

The Rabbit IgG is purified by Epitope Affinity Purification

FORMULATION

This affinity purified antibody is supplied in sterile Phosphatebuffered saline (pH7.2) containing antibody stabilizer

SPECIFICITY

This antibody recognizes Annexin IV protein. It cross-reacts to human, mouse and rat. Others are not tested.

STORAGE

The antibodies are stable for 24 months from date of receipt when stored at -20oC to -70oC. The antibodies can be stored at 2oC-8oC for three month without detectable loss of activity. Avoid repeated freezing-thawing cycles.

APPLICATIONS/SUGGESTED WORKING DILUTIONS*

- Western Blot: 0.1-1 µg/ml
- ELISA: 0.01-0.1 µg/ml
- Immunoprecipitation: 2-5 µg/ml
- IHC: 2-10 µg/ml
- Flow cytometry: Not tested
- Molecular Weight: 34.0
- Positive Control: Kidney Tissue
- Cellular Location: Cell Membrane

*Optimal dilutions should be determined by researchers for the specific applications.

FOR RESEARCH USE ONLY.

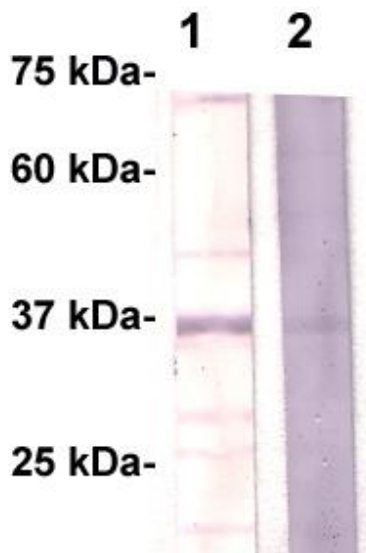
AbboMax, Inc 2528 Qume Drive, Suite 8, San Jose, California 95131, USA
1 408-573-1898 (Tel). 1 408-573-1858 (Fax). www.abbomax.com info@abbomax.com



FOR RESEARCH USE ONLY.

AbboMax, Inc 2528 Qume Drive, Suite 8, San Jose, California 95131, USA
1 408-573-1898 (Tel). 1 408-573-1858 (Fax). www.abbomax.com info@abbomax.com

DATA ATTACHMENTS



Western Blot: Whole tissue lysate derived from mouse kidney was resolved onto 12% SDS-PAGE, transferred onto NC membrane, then immune-probed by anti-Annexin IV antibody (Lane 1) or pre-depleted antibody by the immunizing peptide (lane 2) at 1:500. The immune-reactive band around ~34kDa was abolished .

REFERENCES

FOR RESEARCH USE ONLY.